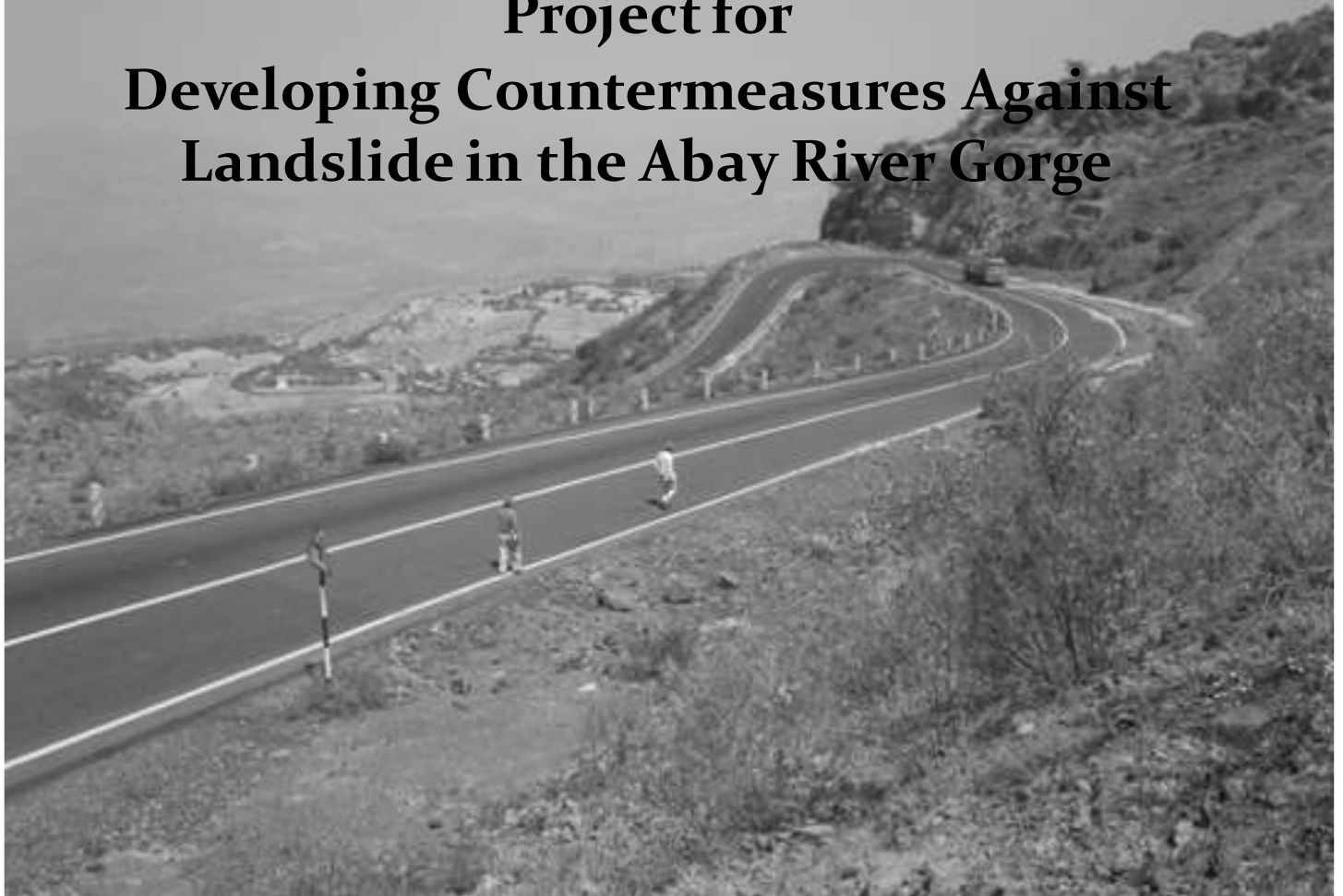
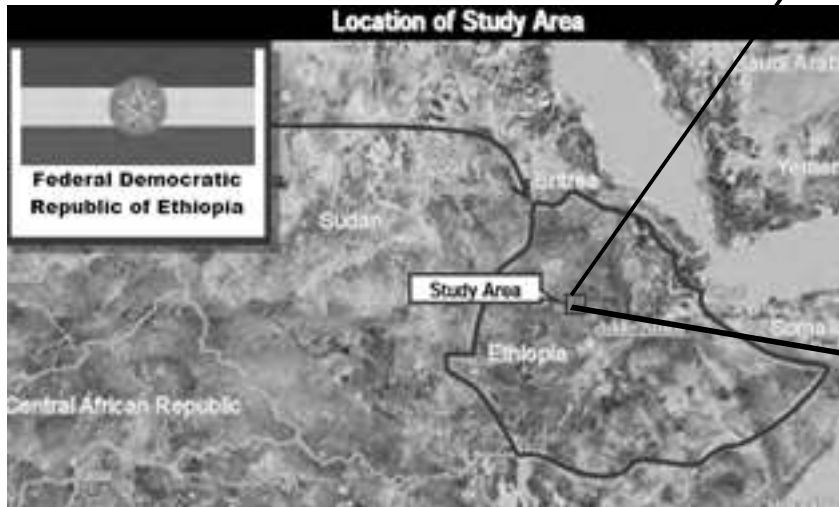


GSE-JICA Technical Cooperation Project for Developing Countermeasures Against Landslide in the Abay River Gorge



The project landslide-affected area lies in the Abay Gorge along main road 3 between Goha Tsiyon and Dejen (~40.5 km).

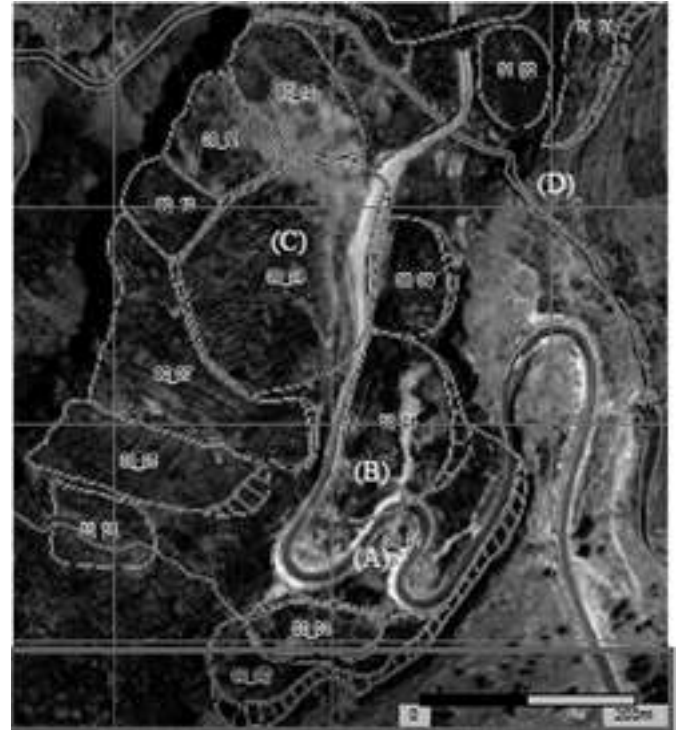


Project for Developing Countermeasures against Landslides in the Abay River Gorge

- i. Implemented:*** based on the Minutes of Meeting agreed on December 12, 2009 between the GSE and JICA.
- ii. Launched:*** April 2010 & will be completed in March 2012.
- iii. Main goals:***
 - a) Figure out the landslide triggering mechanisms and mitigate human suffering and economic losses by implementing appropriate countermeasures.**
 - b) Assist GSE to acquire skills of analyzing and investigating landslides.**

Landslide Survey Methodology

- ❖ Preliminary Geomorphologic Survey;
- ❖ Geology of the landslide area;
- ❖ Surface anomalies of the Landslide;

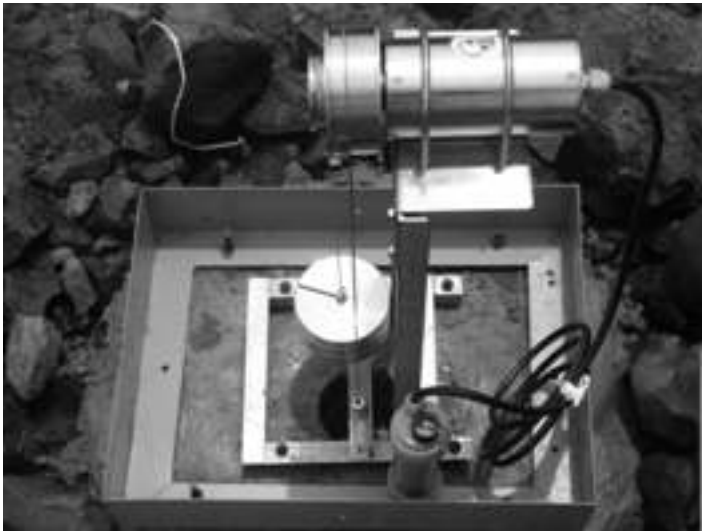


Monitoring

Extensometer

Used to identify movement of landslides and measure displacement of slip surfaces both on the ground and underground (borehole).

Borehole extensometer



Surface extensometer

